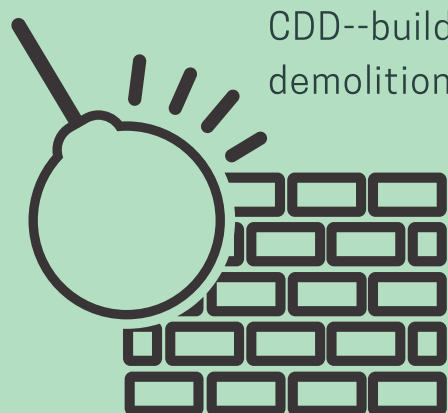


# ZERO WASTE DEVELOPMENT

## WE HAVE A DUTY TO OUR COMMUNITY TO PURSUE ZERO WASTE DEVELOPMENT.

For the built environment, that means striving to maintain existing buildings and to eliminate **construction and demolition debris (CDD)**.



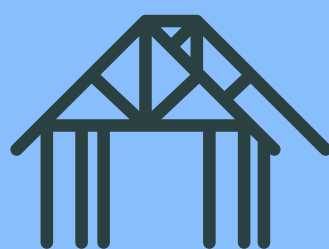
CDD--building waste generated during construction, renovation, and demolition of buildings and roads--makes up **40%** of our landfills.

## 600 MILLION TONS

CDD generated **600 millions tons** of waste in 2018, 90% of which was from demolition. That's **2x** the amount of consumer waste.

## ZERO WASTE DEVELOPMENT REQUIRES A NEW APPROACH: DECONSTRUCTION INSTEAD OF DEMOLITION.

**Deconstruction** involves the careful and systematic dismantling of a building to maximize the recovery of valuable building materials and architectural components for reuse, resale, and recycling.



## COMMUNITY VALUES

- Promotes a **circular economy** that recognizes the societal benefits of reuse and recycling
- Values creativity in improving design and manufacturing processes
- Celebrates history through salvaging architectural elements



## ECONOMIC IMPACT

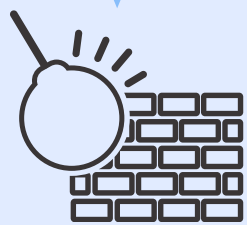
- Boosts local economy
- Creates jobs and upgrades workforce skills
- Lowers cost of maintaining landfills
- Develops the deconstruction services industry

## ENVIRONMENTAL BENEFITS



- Reduces waste destined for landfills
- Reduces carbon emissions
- Retains embodied energy of buildings
- Helps meet Green New Deal targets

## WHAT YOUR MUNICIPALITY CAN DO



- Enact demolition delays to allow time for salvage of architectural elements and building materials.
- Track and share demolition data to show how much usable material goes to landfills.
- Require deconstruction and salvage for certain buildings.
- Incentivize recycling and reuse of building components to improve CDD management.



**CROWD** (Circularity, Reuse & Zero Waste Development) empowers New York State communities to plan sustainable and resilient built environments. CROWD provides data-driven analysis and policy recommendations to promote salvage and reuse of building materials and architectural elements.

CROWD Members:

//Cortland Reuse//Circular Construction Lab, Cornell University//Finger Lakes Reuse Inc.//Historic Ithaca //Just Places Lab, Cornell University//Preservation Association of Central New York//Susan Christopherson Center for Community Planning//